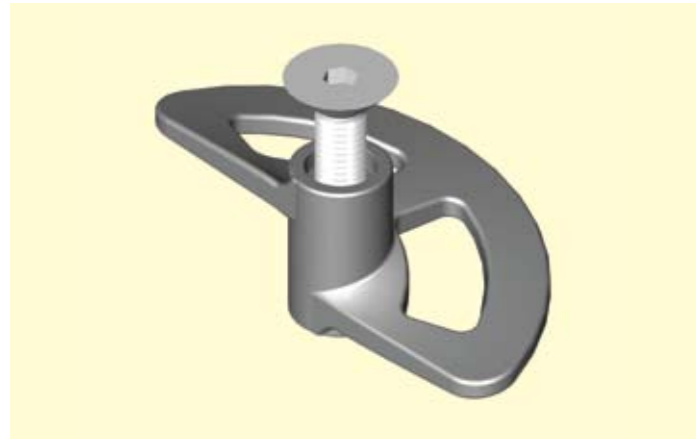


FloorFix HT



- Allows for +/- 6mm construction tolerance
- Can fix up to 25mm thick steel as standard
- Hot Dip Galvanised finish as standard
- Easily installed from the top side only
- No drilling, no tapping or welding required
- Allows easy repositioning or lifting of floor plate
- No special tools or skilled labour required
- No access to the underside required
- Tested for vibration conditions at TUV

THE FLOORFIX HT has been developed following customer feedback to provide a fixing with increased functionality to suit a wider range of applications. **Floorfix HT** is designed to fix flooring plate to supporting steelwork from the topside only without the need for time consuming on site drilling, tapping, bolting or welding. It works on a cam mechanism that can be operated using a basic hexagon key drive. **Floorfix**

HT is so named because it allows steel erectors a high degree of tolerance, it retains all the benefits of our widely renowned original design but is far more user friendly. **FloorfixHT** allows for floor plates to be fixed to new steelwork that is erected within +/- 6mm of its intended position. It is capable of fixing to steel flanges from 3 to 25mm without the need for additional packing pieces.

Plate Preparation

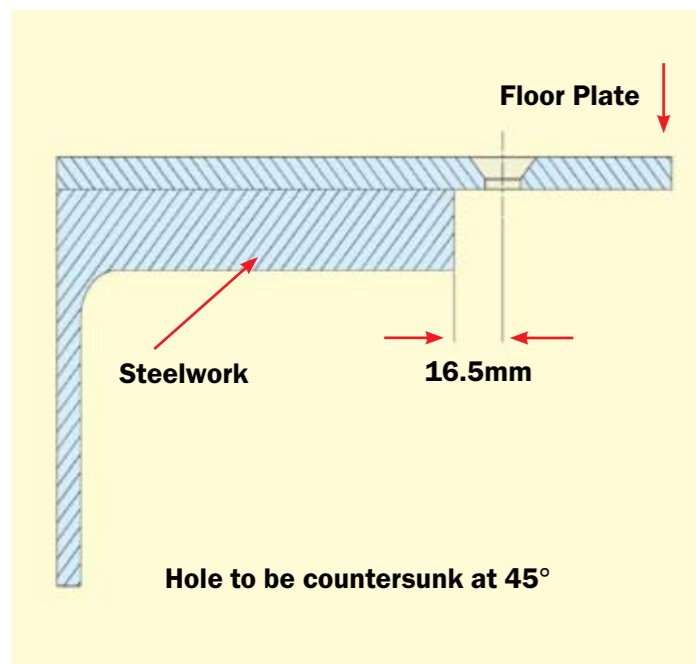
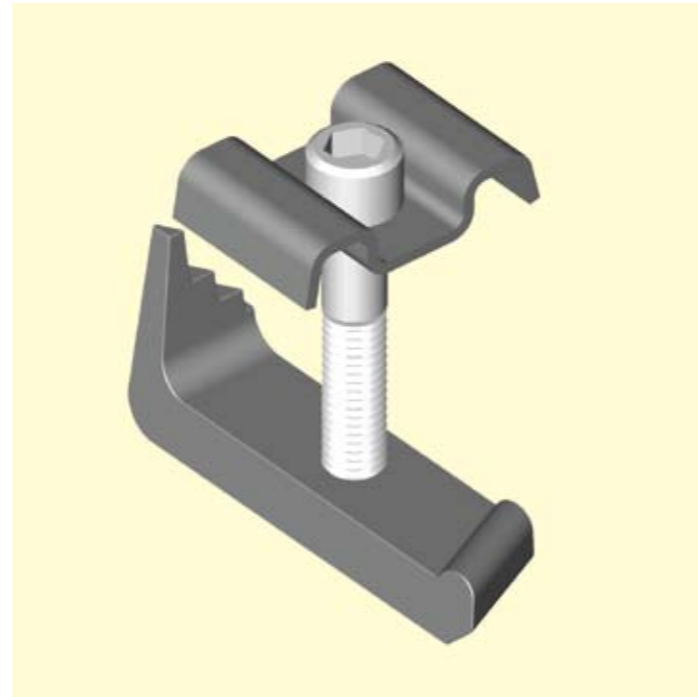


Table 1

Product code	Screw dia	Floor Plate Thickness		Steelwork Flange Thickness		Tightening torque (Nm)
		min	max	min	max	
FloorFix M08HT	M08	3	12	3	25	20
FloorFix M10HT	M10	5	12	3	25	25
FloorFix M12HT	M12	6	12	3	25	30

Floorfix HT has been tested for vibration conditions to simulate the most common applications where the fixings would be used e.g. **walkways, machine shops** and **press shops**. Please ask our technical department for a copy of the certificate should you require this.

Gratefix



- Mechanical Galvanised Malleable Iron
- Stainless Steel Grade 304
- Easily installed from the top side only
- No drilling, no tapping or welding required
- Allows easy repositioning or lifting of grating
- No special tools or skilled labour required
- No access to the underside required
- Tested for vibration conditions at TUV

THE GRATEFIX is a heavy-duty fixing that allows open floor grating to be fixed to the supporting steelwork from the topside only. **The Gratefix** features a cast bottom piece that provides additional strength to clamp on to the steelwork flange. The Gratefix is available in several different styles to suit the grating dimensions and the application. A mechanical galvanised **M10** version is available with a symmetrical top bracket to suit **30mm ctrs** grating or with an offset bracket to suit **30-41mm ctrs** grating most commonly found in the UK. The **M08** version is also available in grade **304** stainless steel with a top bracket to suit **30mm ctrs**.

Option 1

Pressed Top Bracket – Stainless steel to EN 10088 Grade 1.4301 (AISI 304)
Cast Bottom Bracket – Stainless Steel to ASTM A743 Grade CF-8 (S30400)

Option 2

Pressed Top bracket – Material: Mild steel to EN 10025 grade S275
Cast Bottom Bracket – Material: Malleable iron to BS 1562: Grade EN-GJMB-300-06
Both finished in: Mechanical Galv to ASTM B695

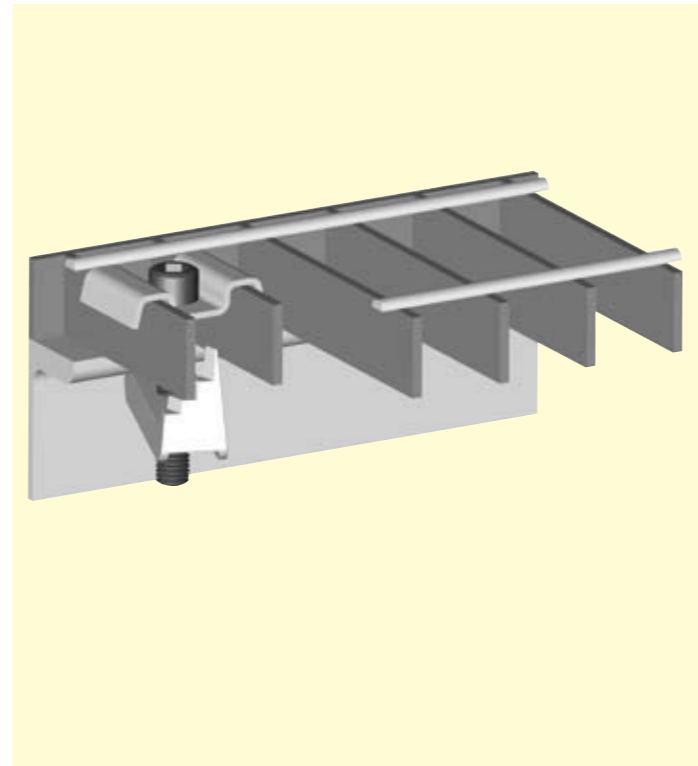
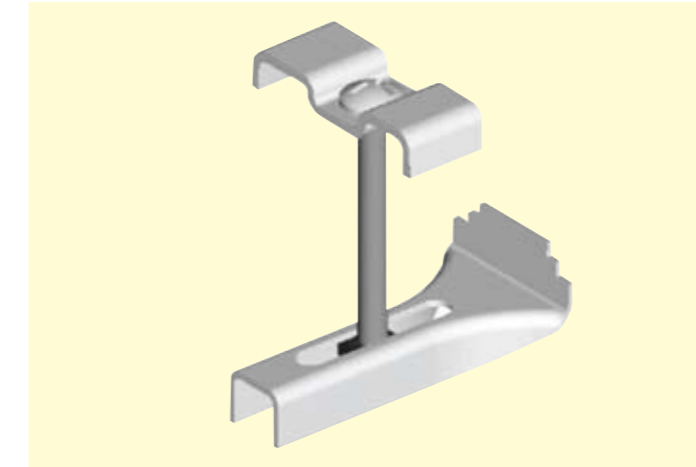


Table 2

Product code	Material/Finish	Screw dia	To suit Grating Bar centres	To suit Grating Bar depths (mm)	Tightening torque (Nm)
GF3 S08 ASSY	Option 1	M08	30mm	50	8
GF1 G10 ASSY	Option 2	M10	30 to 41mm	50	5

Grating Clip



THE GRATING CLIP is the most common style of clip used for fixing down open steel flooring in the UK. It provides a quick and cost effective method of fixing. It is **Hot Dip Galvanised** and comes as standard with a top bracket to suit **30-41mm ctrs grating bars**.

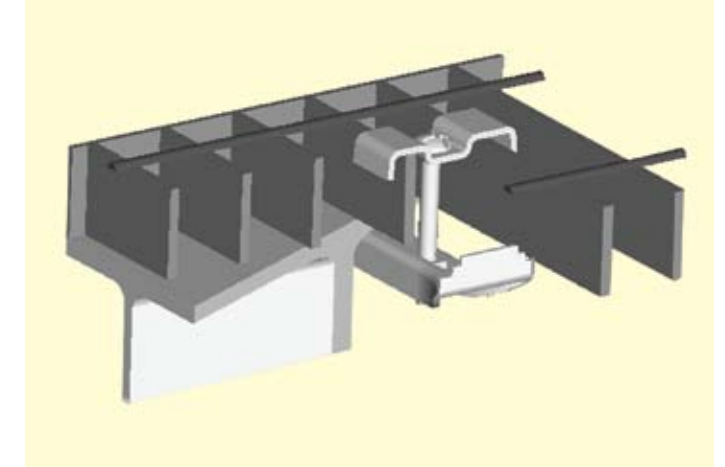


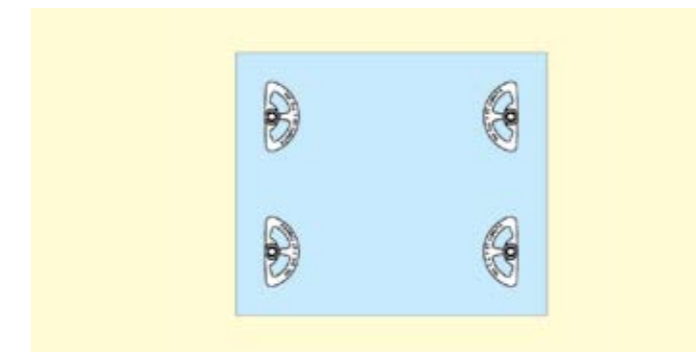
Table 3

Product code	Screw dia	Grating width		Grating depth Maximum
		min	max	
GRAT1G08	M08	30	41	50

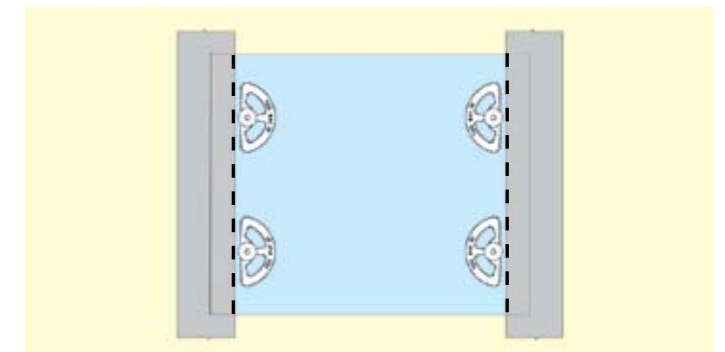
FloorFix HT Installation Instructions

Note 1 We would recommend using the M12 version when vibration conditions are incurred as this can be tightened to a higher torque.

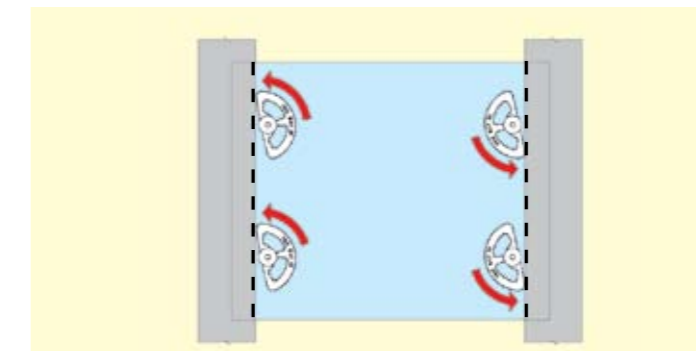
Note 2 If the steelwork being connected to is thicker than 25mm then we can supply packers and a longer bolt to increase the fixing range.



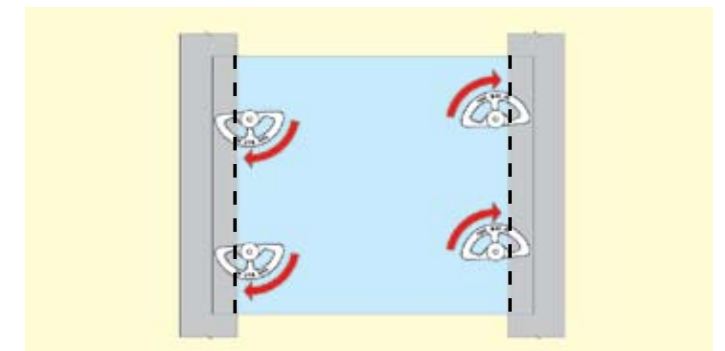
Step 1 Assemble the **Floorfix HT** to the underside of the floor plate making sure the markings "THIS WAY UP" are facing it. Loosely tighten the bolt making sure the flat edge of the fixing is in line with the edge of the steelwork it is going to fix to.



Step 2 Lower the plate in to position over the supporting steelwork.

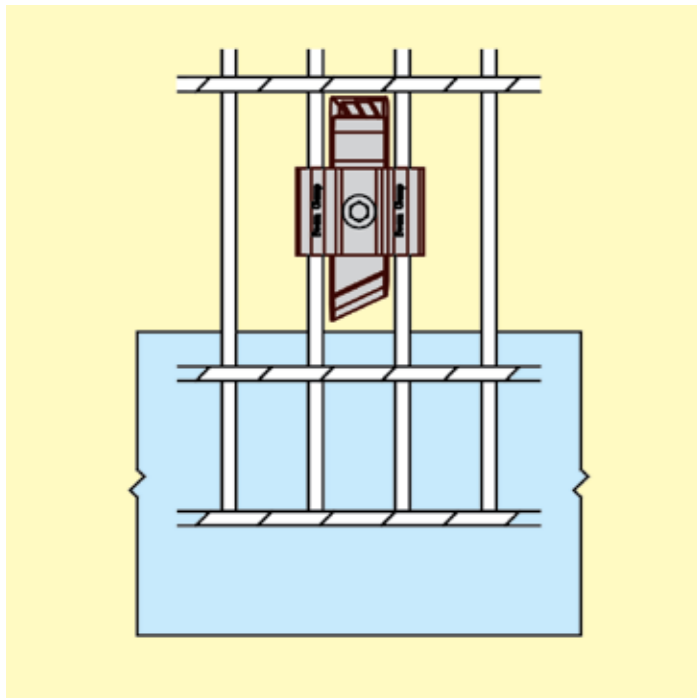


Step 3 Once the floor plate is in the desired position rotate the countersunk bolt one full turn anti-clockwise.

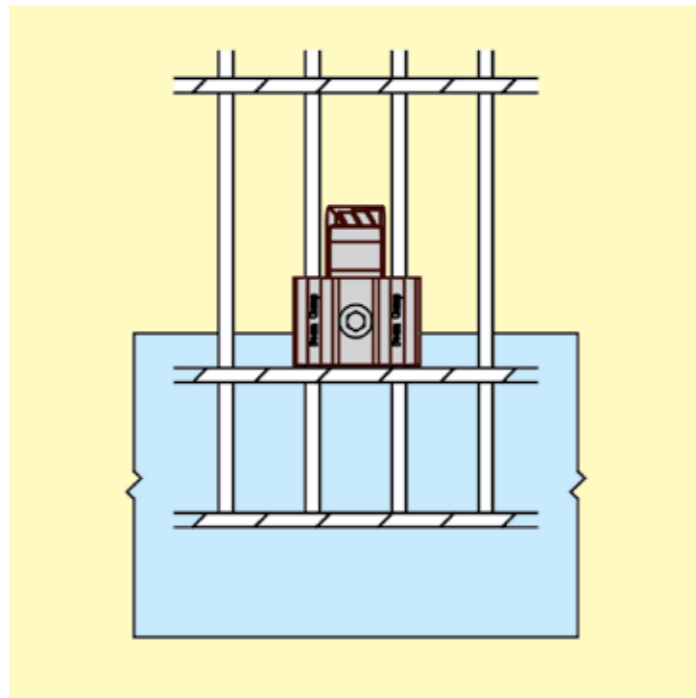


Step 4 Tighten the countersunk screw until the plate is secured, for guaranteed performance use the recommended tightening torques given in table 1.

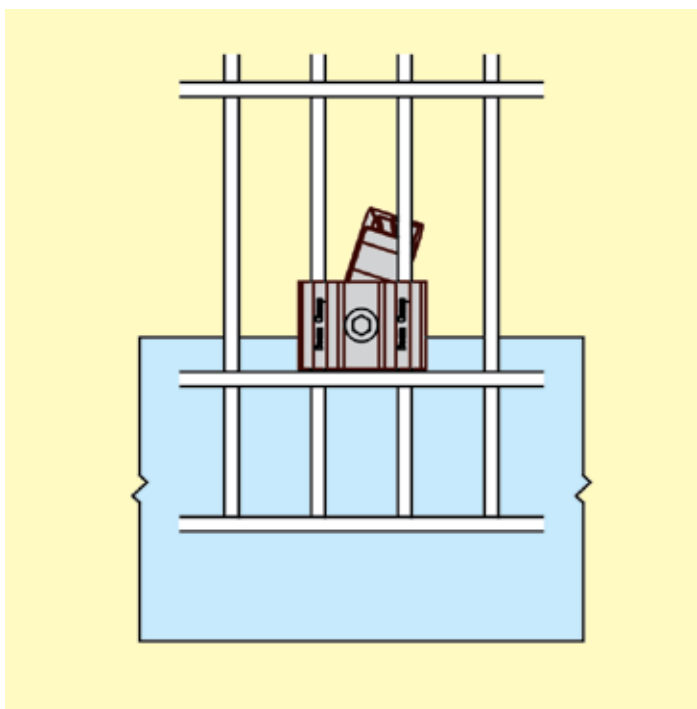
Gratefix Installation Instructions



Step 1 Pass the bottom casting through the open part of the grating and ensure the top bracket sits on to the load bearing bars.



Step 2 Slide the **Gratefix** towards the steelwork flange as far as it will go to ensure maximum clamping force.



Step 3 Tighten the central screw and ensure that the cast bottom piece rotates until one of the steps locate on the loading bar of the grating. If the cast bottom piece does not locate it will need adjusting in height on the central screw to allow it to do so. Please remove the **Gratefix** to adjust the height of the cast bottom piece and then insert back through the grating bar. Once a step locates on the grating bar from tightening you can proceed to fully tighten the central screw. We recommend using the torques stated in Table 2 for optimum performance.



Gratefix has been tested for vibration conditions to simulate the most common applications where the fixings would be used e.g. walkways, machine shops, and press shops. Please ask our technical department for a copy of the certificate should you require this.

Beam Clamp®

A KEE SAFETY PRODUCT
SAFE STEELWORK CONNECTIONS

Floor Fixings



Testing

As previously mentioned the **Floorfix HT** and **Gratefix** have been tested in conditions to simulate the typical applications of these fixings. The fixings were tested for performance in both vertical and horizontal

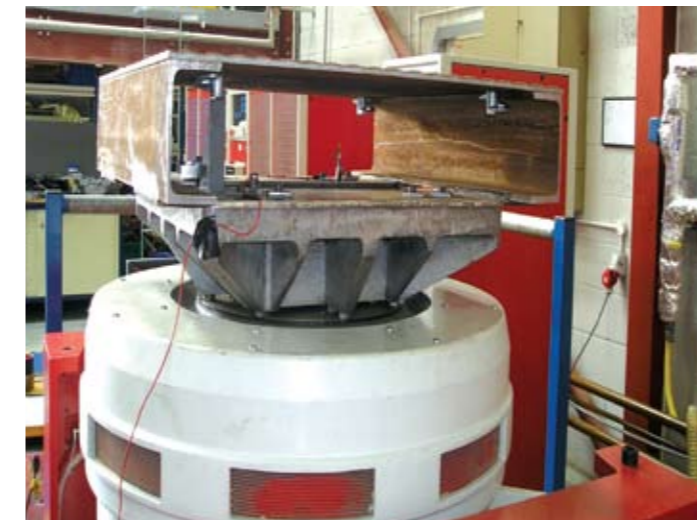
axis to ensure they did not work loose when subjected to vibration conditions. The test set-up can be seen below, the certificates are available on request.



Horizontal Axis Test

FASTRACKCAD
ARCHITECTURAL CAD DATABASES

Please visit our website and click on the FastrackCAD link for 2D CAD blocks in both .dwg and .dxf formats of our fixing range.



Vertical Axis Test

TEKLA Structures

The Floorfix HT features within Tekla Structures Steelwork detailing package for ease of specification. The macros are fully interactive so the position can be changed to suit your individual applications.



Kee Safety Ltd.
Cradley Business Park
Overend Road
Cradley Heath
West Midlands
B64 7DW

Tel: +44 (0) 1384 632386
Fax: +44 (0) 1384 632384

Email: sales@beamclamp.com
web: www.keesafety.com/beamclamp

- EASILY INSTALLED FROM THE TOP SIDE ONLY
- NO SKILLED LABOUR REQUIRED
- REMOVABLE FOR MAINTENANCE
- NO SPECIAL TOOLS REQUIRED